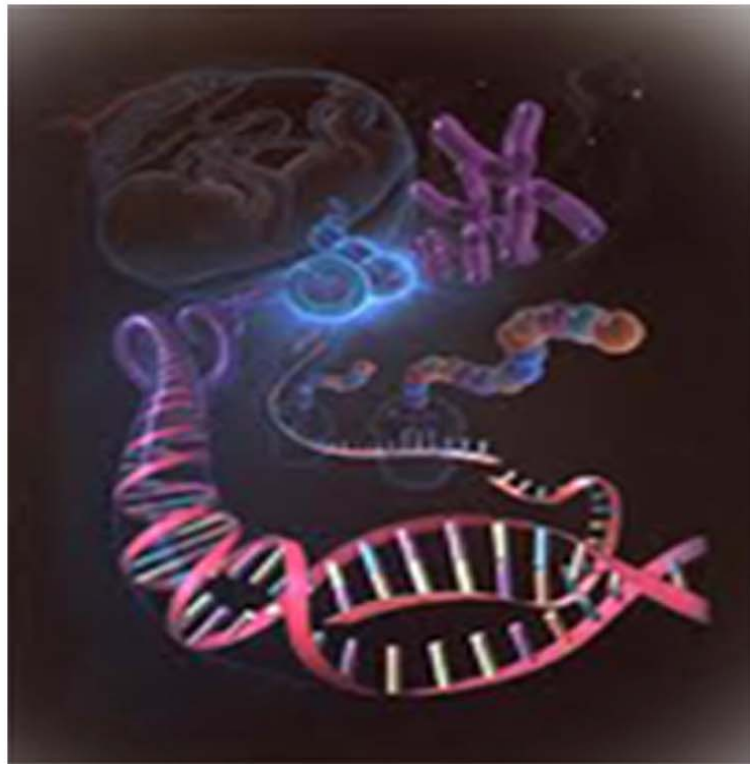




# International Journal of Life Sciences Biotechnology and Pharma Research





Research Paper

# EXTENSIVE PHYSIOLOGICAL STUDIES ON THE INFLUENCE OF $\beta$ -GLUCOSIDASE ON STARCH BIOSYNTHESIS AND DEGRADATION IN TRANSGENIC POLLEN

Professor Bright Chima Megbo<sup>1\*</sup>

\*Corresponding Author: **Bright Chima Megbo**, ✉ [mbright@hotmail.co.uk](mailto:mbright@hotmail.co.uk)

The transgenic tobacco pollen development was divided into six developmental stages/phases which correlated with distinct cytological characteristics. On the basis of microscopic and histochemical studies, using X-glc (5-Bromo-4-chloro-3-indolyl- $\beta$ -D-glycopyranoside) as substrate,  $\beta$ -glucosidase activity was found in half the pollen of the transgenic tobacco plants. Detection of the  $\beta$ -glucosidase (*Zm-p60.1*) was achieved using  $\beta$ -glucosidase histochemical and biochemical assays. The activities of selected enzymes of sucrose metabolism (UDPG-pyrophosphorylase) and starch metabolism (ADPG-pyrophosphorylase, starch-phosphorylase, and amylase) were biochemically analyzed. Histochemical studies with potassium iodide revealed that 50% of the pollen of the positive plants (i.e. tobacco plants expressing  $\beta$ -glucosidase activity) exhibited normal starch accumulation. Biochemical determination of starch revealed that the pollen expressing *Zm-p60.1* contained significantly lower amount of starch in comparison to the pollen from negative plants (i.e., tobacco plants not expressing  $\beta$ -glucosidase activity). About 50% of the pollen population expressing *Zm-p60.1* had decreased starch content. The same starchless pollen exhibited  $\beta$ -glucosidase activity.

**Keywords:**  $\beta$ -glucosidase, *Zm-p60.1*, Enzymes, Starch biosynthesis, Transgenic tobacco, Transcription inhibitors, Pollen, etc.

## INTRODUCTION

In this research, the influence of the expression of maize  $\beta$ -glucosidase in tobacco plants on pollen development and starch metabolism was examined. The dynamics of starch metabolism in tobacco pollen was studied in the developing

pollen of positive plants in comparison to that of the negative plants so as to explain the possible role of *Zm-p60.1* in starch metabolism. 50% of the pollen population from the plants expressing the  $\beta$ -glucosidase was found to be sterile. As this specific  $\beta$ -glucosidase is able to cleave cytokinin-

<sup>1</sup> Professor of Biological Sciences Education, Commonwealth Open University, British Virgin Islands, UK.

O and N3-glucosides, the eventual correlation of the studied processes with cytokinins was also of interest. The experimental system for this study was as follows: pollen from positive plants and from negative plants. Histochemical staining of pollen grains showed the gene expression. Pollen was studied in 6 phases/stages of development during which starch in control plants accumulates and disappears again. Centrifugation in Percoll gradient separated pollen into 3 fractions according to their starch content. Aside from the key characteristics of the pollen from this tobacco plant, i.e., starch, reducing sugars and protein contents, the activities of enzymes of sugar and starch metabolism were studied.

## MATERIALS AND METHODS

Tobacco plants were raised from seeds *in vitro* between late February and March in agar medium after Murashige and Skoog, 1962). The seedlings were transplanted *ex vitro* into soil in April after they had attained a height of about 7 cm. A month later they were transferred into large plastic containers in the greenhouse where they grew until the end of September. To maintain the plants at the flowering phase from late June until September, old shoots were continuously cut-off, and unused flowers at post-anthesis stage were picked and discarded regularly.

### Methods

#### **Determination of $\beta$ -glucosidase Activity in Leaf Extracts**

This method is based on the cleavage of the  $\beta$ -D-glucopyranoside part of PNPG (4-nitrophenyl- $\beta$ -D-glucopyranoside) by  $\beta$ -glucosidase, enabling the determination of the resulting product of the reaction. After stopping the reaction by adding 2 M  $\text{Na}_2\text{CO}_3$  to the incubation mixture, the product of the reaction immediately developed a yellow coloration (Megbo, B C 2000).

#### **Determination of $\beta$ -glucosidase Activity in Pollen Samples**

This method is based on the cleavage of the  $\beta$ -D-glucopyranoside part of X-glc (5-Bromo-4-chloro-3-indolyl- $\beta$ -D-glucopyranoside) by  $\beta$ -glucosidase, releasing a blue stain as a product of the reaction. 100  $\mu\text{L}$  of the staining solution was pipetted onto pollen sediments in a centrifuge tube. This mixture was left to stand with shaking on a vortex shaker for 8 h at 25 °C. The product of the reaction developed deep coloration after 8 h and stained the pollen population blue, which indicated a positive reaction to the  $\beta$ -glucosidase (Megbo, B C 2000).

#### **Description of Tobacco Flower Buds Developmental Stages**

Tobacco flower buds were collected in small labelled beaker with moist filter paper. The lengths of the tobacco flower buds coincided with their developmental stage which correlated with distinct cytological characteristics. For instance, stage 1: 13-17 mm long (from the base of the flower bud to the petal apex) – petals are hidden in the sepal; Stage 2: 18-24 mm long, petals slightly protruding from the sepal; Stage 3: 25 -30 mm long, petals very visible, pollen filled with starch; Stage 4; 32-38 mm long, petal tube usually bent (a lot of starch still present); Stage 5: 39-43 mm long, the flower bud apex starts turning yellow or purple. The amount of starch in the pollen decreases; and Stage 6: 44-50 mm long, the flower bud is almost open - anthers are still closed.

#### **Isolation of Tobacco Pollen Grains From Anthers**

A pollen isolation medium which constituted of 5% manitol, 0.01%  $\text{H}_3\text{BO}_3$ , 1 mM  $\text{Ca}(\text{NO}_3)_2$ , and 5 mM  $\text{KNO}_3$  was prepared for the isolation of

tobacco pollen from the anthers. In the laboratory, the flower buds which had been grouped according to their developmental stages were opened using forceps. The flower anthers were isolated from the stamens into a clean cooled mortar. Immediately, 0.5 mL of the pollen isolation medium per flower bud was pipetted onto the anthers, so that the anthers did not float on the medium. Pollen grains were isolated from the anthers by gently pressing them with a pestle. The resulting pollen suspension was transferred into clean labelled centrifuge tubes, using a pipette. Stages 1 and 2 pollen were centrifuged at 200 g for 90 s. The resulting supernatant was discarded and the sediment was suspended once again in the same medium. The pollen was collected on a filter paper by filtration and applying vacuum using the water pump, and then transferred onto a massed and labelled aluminium foil. The aluminium foil together with the enveloped pollen was re-massed, and the new mass registered. The pollen from the remaining pollen developmental stages (i.e., 3 through 6) was filtered without prior centrifugation. Pollen obtained as described above was then stored at  $-70^{\circ}\text{C}$  for further use.

#### **Tobacco Pollen In Vitro Culture Experiments**

The mediums used for this study were Mediums B, BSach, BS1 or C. These mediums were used separately as an environment for the cultivation experiments, with an inhibitor or growth regulator (W) or without a growth regulator (Wo). Medium B after Harada and Kyo (1986) was the basic medium for the rest. Medium BSach contained the same medium compounds as medium B, except for the substitution of 300 mM manitol with 10% sucrose (292 mM). In medium BS1, 300 mM manitol was substituted with 1% sucrose. Medium

C had all medium B compounds in addition to 3 mM glutamine and 1 mM sucrose.

The pollen suspensions in centrifuge tubes were purified by centrifugation at 100 rpm for 2 min after which anther remains were discarded. Centrifugation of re-suspended pollen sediments in medium B was repeated twice for each centrifuge tube, and the supernatant was removed by sucking with adjustable pipette. Specific volume of the pollen suspension samples at a density of 50,000 pollen grains per mL was transferred into labelled sterile petri dishes containing medium B and cultured for the required time.

#### **Separation of Pollen Samples on Percoll Discontinuous Gradients**

First, 1 mL 65% Percoll was obtained by mixing 6.5 mL absolute Percoll (supplied by SIGMA) with 3.5 mL medium B. This 65% percoll was pipetted into a clean dry 10 mL centrifuge tube with a screw cap. 1 mL 55% Percoll was carefully layered onto the 65% Percoll, such that it formed a clear band with it. Then, the pollen suspension was layered onto the top of this discontinuous gradient. Following centrifugation at 1000 rpm for 5 min, each pollen population formed bands or pellet, in this order: top = T (water/55% Percoll interface); middle = M (55%/65% Percoll interface), and bottom = B (sediment). Each pollen population was collected with a pipette and diluted with 1 mL of medium B. Finally, the re-suspended pollen fractions in medium B were centrifuged at 7000 rpm for 1 min. The sediment in each centrifuge tube was used for further experiments such as  $\beta$ -glucosidase assay, starch estimation, etc.

#### **Quantitative Determination of Protein Content in Tobacco Pollen**

The BIORAD method, which is a modification of

the Lowry method, was used for measurement of the amount of protein in the transgenic pollen. This method is based on two reactions, and uses two reagents: A and B. First, the formation of a coordination complex between  $\text{Cu}^{2+}$  and four hydrogen atoms, and from each of the two adjacent peptide chains, and second - the reduction of the phosphomolybdate-phosphotungstate reagent (Folin-Ciocalteu reagent) by tyrosine and tryptophan residues.

20  $\mu\text{L}$  of each pollen sample (supernatant) was pipetted into each clean and dry test tube. Then, 100  $\mu\text{L}$  of reagent A (see BIORAD method) was added to each test tube and the mixture was stirred using a Vortex mixer. Next, 800  $\mu\text{L}$  of reagent B was added after mixing reagent A with the pollen sample. The reaction mixture was immediately stirred and incubated for 15 min at room temperature. The absorbance was read at the end of the 15 min incubation, in a UV-Spectrophotometer, at 750 nm against a blank containing 20  $\mu\text{L}$  extraction buffer instead of pollen extract. The absorbance was stable for at least 1 h.

#### **Quantitative Determination of Starch in Tobacco Pollen**

This method was based on a simplified extraction of starch with 32% perchloric acid, a selective retention of the starch-iodine complex on a glass fibre disk (Whatman GF/A). The starch on the disk is dissolved in 0.75 M sulphuric acid, and estimated with phenol (Lustinec *et al.*, 1983). This method is able to detect as little as 5  $\mu\text{g}$  of starch in different amounts of plant material.

#### **Determination of Amylase Activity in Tobacco Pollen Samples**

The determination of amylase activity was based on the reaction of the released reducing sugars at 40 °C with 3, 5-dinitrosalicylic acid (Bernfeld,

1966) during which a brownish-yellow compound is formed. Then, the absorbance of the product of the reaction was then read at 570 nm against a blank in a spectrophotometer.

The solution of amylopectin (0.2 mL) was pipetted onto 0.2 mL of the enzymatic extract (i.e., pollen supernatant) in a 15 mL test tube and the reaction mixture was incubated for 20 min at 30 °C. After the incubation time has elapsed, the reaction was stopped by adding 0.4 mL of 3, 5-dinitrosalicylic acid (DNSA). Then, these stoppered test tubes (i.e., test tubes having with screw caps) placed on a test tube rack were transferred onto a boiling water bath for 5 min. During this time, the product of the reaction developed a brownish-yellow coloration of varying intensities depending on the strength of the amylase activity.

#### **Determination of Selected Enzymes Activities in the Tobacco Pollen**

The activities of UDPG-pyrophosphorylase (UGPase); ADPG-pyrophosphorylase (AGPase), and Starch-phosphorylase were measured using the enzyme assay described by Megbo, B C (2000). This method was based on the reduction of NADP (Nicotinamide adenine dinucleotide phosphate). Each of the enzymes determined produces glucose-1-phosphate *in vivo*. Determination of enzymatic activity was by the help of two enzymes namely phosphoglucomutase and glucose-6-phosphate dehydrogenase (i.e., PGM and GDH), and consisted in the conversion of glucose-1-phosphate to glucose-6-phosphate, and its subsequent oxidation to phosphogluconolactone (PGL), while the NADP is reduced to NADPH. The amount of NADPH formed during the reaction was then monitored using spectrophotometer. The components of the reaction (i.e., incubation mixture including the

chilled pollen extract) were added consecutively into centrifuge tubes and the reaction was commenced by adding 2.5 mM Sodium pyrophosphorylase.

## RESULTS AND DISCUSSION

Histochemical studies using potassium iodide confirmed that only 50% of the pollen population of positive plants exhibited normal starch accumulation. Starch formation and degradation in the pollen at respective pollen developmental stages were first observed microscopically. It was possible to observe starch granules in the developing pollen prior to and after pollen histochemical staining.

Further histochemical studies using X-glc (5-Bromo-4-chloro-3-indolyl- $\beta$ -D-glycopyranoside), a  $\beta$ -glucosidase substrate, showed that the substrate was hydrolyzed in the active pollen thereby releasing a blue product. This revealed that the majority of the pollen grains that showed the activity of *Zm-p60.1* contained very low amount of starch.

The connection between starch accumulation and the activity of ADPG-pyrophosphorylase had been proved in many starchless mutants, for instance, during studies with maize mutants, *shrunk-2* and *brittle-2*, which are both deficient in this enzyme and starch formation (Tsai and Nelson, 1966). In experiments with peas, Smith *et al.* (1989) showed that a pea line having recessive *rb genes* (the gene controlling the level of ADPG-pyrophosphorylase (AGPase) in developing pea embryos) exhibiting 3-5% of AGPase activity had only between 38-72% of starch as compared to the amount of starch found in normal pea line. In *Arabidopsis thaliana*, Lin *et al.* (1988a) isolated a mutant containing less than

2% of starch in comparison to the normal strain, and less than 2% AGPase activity. In potato tuber, Muller-Rober *et al.* (1992) expressed a chimeric gene encoding the antisense RNA for the AGPase small unit which caused a reduction in enzymatic activity to 2-5% of the normal levels and this led to a reduction in starch content.

Caspar *et al.* (1985) obtained a null mutant of *Arabidopsis thaliana* for the chloroplastic phosphoglucomutase (PGM) that was defective in starch synthesis. This starchless phenotype of null plastidic PGM mutant supports the prevailing view that carbon flow into starch occur via the gluconeogenesis pathway within the plastid compartment. Okita (1992) reported that the absence or depression in the levels of starch synthesis can be attributed to a direct causal relationship between defects in the expression of the structural genes for AGpase and the concomitant lower amounts of this enzyme's activity.

It is apparent from the results of this study that there were notable differences in the activities of starch-degrading enzymes (starch-phosphorylase and amylase) and AGPase (a starch synthesizing enzyme) between the positive pollen (i.e., pollen expressing *Zm-p60.1*) and negative pollen (i.e., pollen not expressing *Zm-p60.1*) or the control.

The results of this study substantiate the general view that AGPase plays a key role in starch biosynthesis. When the second phase of starch synthesis attained its maximum point at pollen developmental stages 3 and 4, the activity of AGPase rose considerably in both types of pollen with the most significant difference that the pollen expressing *Zm-p60.1* had 2.5-fold lower amount of starch in contrast to the control. The above data are in agreement with the general

view that AGPase activity is positively correlated with starch biosynthesis. These and other results support the notion that in the event of enough level of the enzyme, its activity and subsequently starch synthesis are principally contingent on the presence of inhibitors and activators, source of needed precursors and ATP (Sun *et al.*, 1999).

The impact of an allosteric activator called 3-phosphoglycerate (3-PGA) on AGPase and UGPase activities was also investigated. Generally, it was noted that this allosteric activator elevated the activities of these enzymes progressively with increase in its concentration (from 1 mM to 20 mM) in the reaction mixture. The highest increase in the enzymatic activity per additional mM 3-PGA in the case of UGPase was observed between the concentration of 5 and 10 mM, where the increase was more than two-folds. In contrast, for AGPase, the highest increase in the enzymatic activity per additional mM 3-PGA was three-folds between the concentration of 1 and 5 mM. Comparing the influence of 3-PGA on the enzymatic activities of UGPase and AGPase, this allosteric activator increased UGPase activity by three-folds against AGPase at a concentration of 10 mM.

Several experiments have been cited to support a direct correlation between the concentration of 3-phosphoglycerate and starch accumulation, and an inverse one between inorganic phosphate (Pi) and starch content. This is true for photosynthetic tissues where Pi and 3-PGA levels within the chloroplast are good indicators of energy and carbon status, and in this way the regulation of AGPase provides a good mechanism for modulating the flux of photosynthate into starch (Okita, 1992). Also, in non-photosynthetic tissues of maize endosperm, potato tubers, cassava root and rice endosperm,

Zhang *et al.* (1996) observed that the AGPase activity was highly contingent on the presence of phosphoglycerate. This is a situation relevant to pollen development.

However, it has been reported that pea embryo (Hylton and Smith, 1992) and barley AGPases were not highly activated by 3-phosphoglycerate (Kleczkowski *et al.*, 1993). Activation of the bean cotyledon AGPase by 3-PGA was only 1.5 fold when the activity was measured in the pyrophosphorolysis direction (Weber *et al.*, 1995). It has been observed that both plant and bacterial AGPases were usually much less activated by allosteric activators in the pyrophosphorolysis direction than in the synthesis direction (Ghosh and Preiss, 1996). Thus, the higher activation of for the bean cotyledon or the tobacco extract enzyme being discussed herein may be observed in the synthesis direction, which is the physiological direction.

The temperature and pH optimums were studied for AGPase, UGPase, starch-phosphorylase and amylase. The optimal pH range (pH 6.5 to 7.5) obtained in this study was in agreement with the optimal pH range reported in papers where different biological materials were used (Ghosh and Preiss, 1966; Preiss and Levi, 1980). During this research, studies on the characterization of starch enzymes, it was discovered that the enzymes had maximum activity at temperatures between 40 and 50 °C in the tobacco pollen extract. The maximum activities of UGPase and starch-phosphorylase in the transgenic tobacco were observed at 50 °C, while the optimum temperature for AGPase was 40 °C. The optimum pH and temperature for starch-phosphorylase were pH7 and 50 °C. It may have been interesting to measure starch-phosphorylase activity at pH values higher than

8.5, but the HEPES buffer did not effectively buffer at higher pH. Similar temperature optimum was reported by Khanna *et al.* (1971) for the enzyme in the leaves of *Dendrophyte falcata*. These temperatures had no remarkable denaturing impact on the enzymes, phosphoglucomutase (PGM) and glucose-6-dehydrogenase (GDH), used for the estimation of the produced glucose-1-phosphate. The optimum temperature of 40 °C obtained for tobacco pollen AGPase during this study is in conformity with the results reported for AGPase in wheat and maize endosperm (Keeling *et al.*, 1994). At the temperature of 10 °C AGPase activity was almost impossible to be measured. However, at increasing temperatures AGPase activity rose steadily until it attained its maximum at 40 °C. The most significant effect of increase in temperature on the AGPase activity in the tobacco pollen was between 35 and 40 °C. The optimum temperature for starch synthesis in wheat and maize grains, however, lies in the interval of 25 to 30 °C. Denyer *et al.* (1994) acclaimed that low starch content in storage organs caused by low or high temperatures was a result of high temperature sensitivity of the Soluble Starch Synthase (SSS).

The activity of UGPase increased by 2 and 3-folds in the pollen expressing *Zm-p60.1* against the control at pollen developmental stages 5 and 6 respectively. Stages 5 and 6 in pollen development correspond to the stages where starch degradation occurs. While the UGPase activity increased with progress in the development of the pollen expressing *Zm-p60.1*, it was the opposite in the control.

When the binucleate positive pollen was supplemented with enough sucrose in *in vitro* culture, it was capable of accumulating as much starch as the pollen of control (i.e., negative

pollen). This finding attests that one of the causative factors for low starch accumulation in the pollen expressing *Zm-p60.1* could be insufficient endogenous supply of sucrose which could be converted to starch.

Clement and Audran (1994) in their findings reported that neither microspores nor pollen grains are probably able to regulate starch metabolism, but that the regulation comes from the sporophytic tissues of the anthers. The content of starch in anthers of Lily from the meiocyte stage to pollen maturity has been described by Clement *et al.* (1996). Their report showed two distinct phases of amylogenesis. Two phases of starch accumulation in the pollen were also reported in *Lycopersicum peruvianum*, and these phases are accompanied by some structural changes, from meiosis to pollen maturity (Pacini and Juniper, 1984). The authors affirmed that the first phase commences before the microspores are released from the tetrad and ends before first pollen mitosis. The second phase begins (after first mitosis) at the two-celled pollen stage and terminates with the maturation of the pollen structures accompanied by dehydration, during which starch is degraded to sucrose.

The above findings show that the level of sucrose can indirectly affect the amount of starch synthesized by AGPase. There are evidences that strongly indicate that the activity of UGPase *in vivo* is regulated by substrate availability (Vella and Copeland, 1990).

Starch biochemical studies in conjunction with *in vitro* cultures which revealed that the pollen expressing *ZM-p60.1* contains considerably lower amount of starch in comparison to the control negative, but in rich sucrose medium accumulated starch, suggests that the starch-



synthesizing machinery in the transgenic plant expressing *Zm-p60.1* probably remains intact. This is because if it were the opposite the enzymes of starch biosynthesis would have been defective. This along with other biochemical data of this study point to the fact that the starch-synthesizing enzymes such as AGPase are present in the pollen expressing the  $\beta$ -glucosidase, but are not in full function. This could be caused by several factors such as insufficient level of endogenous ADP-glucose that could be converted to starch or by low level of glucose-1-phosphate, the substrate for AGPase, which could result to a reduced pool of ADP-glucose needed for starch biosynthesis or by low level of allosteric activator (3-PGA) of ADPG-pyrophosphorylase.

The results of this study suggest that UGPase does not play a direct role in starch synthesis in the pollen in the second phase of starch synthesis. Its higher activity in the uninucleate pollen stage may be caused by its connection to the syntheses of the components needed for the formation of the wall of the pollen grain. Pacini and Juniper (1984) reported that exine and intine start to form before the release of the microspores from the tetrad and that their formation is completed after the first pollen mitosis. UDPG-pyrophosphorylase activity in the tobacco pollen was 10-folds higher than that of ADPG-pyrophosphorylase. This finding is in agreement with that obtained in potato tubers (Sowokinos, 1976), where the ratio of activity of both enzymes (i.e., AGPase and UGPase) was in favor of UGPase as its activity was up to 100-folds elevated against that of AGPase.

The results of this study on the course of activity of starch-phosphorylase, which gave a gradual and progressive increase in the activity of this enzyme from stage 1 through 6, support

the suggestion that this enzyme partakes in starch degradation. To confirm that starch-phosphorylase is involved in starch hydrolysis in the pollen, its activity was influenced by using transcription inhibitors actinomycin-D or Cordycepin. The amount of starch in the pollen samples cultured with inhibitors was 3-folds higher than the amount found in the control (i.e., without the inhibitor). The higher content of starch in the treatments with the inhibitors correlates to the fact that the number of starch-phosphorylase transcripts were reduced using the inhibitors, thereby leading to the decreased starch hydrolytic activity of this enzyme. In recent years, works have been published which support starch-phosphorylase's regulation in starch metabolism at the transcription level. For example, in developing cotyledons of peas, mRNA of form II (plastidic starch-phosphorylase) was dominant, while its level was less during germination (Van Berkel *et al.* 1991).

The data measured for amylase activity in this study show that amylase is involved in starch degradation in both types of pollen studied, as its activity was highest at the stages corresponding to those where starch degradation occurs. The high activity of amylase at these stages might have been prompted by the increased expression of the genes for isoenzymes of amylase in the pollen or indirectly by the increase in Gibberellic Acid (GA) synthesis, which induces the expression of the genes for isoenzymes of amylase.

In this study the hydrolytic role of amylase in starch degradation and its possible transcriptional regulation was investigated; amylase activity was measured in *in vitro* matured pollen in the presence of cordycepin or actinomycin-D. The content of starch in the pollen samples where

the inhibitors were used was 3-fold higher in contrast to control, and amylase activity in the control was about 2-folds higher in comparison with treatments with the transcription inhibitors. There was no significant difference in the level of activities between amylase and starch-phosphorylase in the pollen matured in *in vitro* culture in the presence of actinomycin-D or cordycepin. The above results give evidence that amylase partake in starch degradation in the pollen.

The method for starch determination described by Lustinec *et al.* (1983) could be used without modification for determination of starch content in pollen. This method is faster and more starch-specific than the enzymatic ones used by Pucher *et al.* (1948). It can be used for different types of starch, including those of unusual waxy starch. Also, it can differentiate between starch and glycogen which could be useful in analyzing plants infected by some pathogenic fungi in which both polysaccharides namely amylose and amylopectin, occur (Holligan *et al.* 1974).

Protein content in the pollen progressively increased with the pollen developmental stage. The course of changes in protein content in the transgenic pollen was closely in agreement with the results reported by Zarsky *et al.* (1985) on the content of soluble and insoluble protein fractions in tobacco pollen of cultivar Samsun and White Burley, where the content of protein was expressed per pollen grain. However, they reported a slight decline in the amount of protein at stages 5 and 6 of the tobacco varieties cv. Samsun and White Burley. An increasing content of protein following first pollen mitosis and its slight decrease preceding pollen maturity was also

reported in *Lily* pollen (Linskens, 1966) and in tobacco pollen (Villanueva *et al.* 1985).

Gluconic acid lactone (GAL), a  $\beta$ -glucosidase inhibitor, and kinetin were used separately in pollen culture experiments. Each separately stimulated starch accumulation in both types of pollen (positive pollen = pollen expressing the  $\beta$ -glucosidase activity, and negative pollen = pollen not-expressing the  $\beta$ -glucosidase activity), confirming the earlier proposition that the decreased starch formation in the pollen expressing *Zm-p60.1* may not be a result of defects in starch-synthesizing mechanism but due to some physiological factors deregulating the metabolic pathway. The increase in starch accumulation in the presence of exogenously supplemented gluconic acid lactone could be due to the use of the lactose part of this substance as a metabolite in the pollen.

The findings of this work during culture experiments with the binucleate pollen of the positive and negative tobacco plants show that exogenously supplemented kinetin (1 mM) in the culture medium highly supported starch accumulation irrespective pollen type (i.e., in both positive and negative pollen). This is consistent with the findings of Miyazawa *et al.* (1999) and Lustinec *et al.* (1976). The cytokinin (kinetin) might have triggered starch accumulation in the pollen by stimulating increased amyloplast formation and gene expression which enhanced the accumulation of starch and *Agps* (ADPG-pyrophosphorylase small subunit gene), GBSS (granule-bound starch synthase) and SBE (starch branching enzyme) transcripts (Miyazawa *et al.* 1999). A correlation between the accumulation of ADPG-pyrophosphorylase transcripts and starch was also observed in

developing potatoes (Pratt *et al.* 1990). Hormonal regulation of starch accumulation and cell expansion in tobacco stem pith was studied (Lustinec, *et al.* 1976) using different concentrations of naphthalene acetic acid (NAA) and a constant concentration of kinetin ( $10^{-6}$ M). These authors reported that the optimum concentration of NAA ( $10^{-5}$ M) for cell expansion in tobacco stem pith explants, cultivated on agar media containing 4% glucose and kinetin, was at least 10,000 times higher than for starch synthesis ( $10^{-9}$ M NAA) and, that the optimal concentration for cell expansion inhibited starch accumulation in those tissues.

This study showed that only 50% of the pollen population from the plants expressing the  $\beta$ -glucosidase (*Zm-p60.1*) had normal starch accumulation. The other 50% does not accumulate starch. Since *Zm-p60.1* hydrolyzes cytokinin-O-glucosides or kinetin-N3-glucoside, it would be expected that it can release free cytokinins from inactive conjugates and that cytokinin conjugates could be exploited to trigger starch biosynthesis. As cytokinins at optimal concentration range support starch accumulation in plant tissues, it would also be expected that the released cytokinins in the pollen expressing the  $\beta$ -glucosidase will trigger starch accumulation. Instead of this, only 50% not expressing the  $\beta$ -glucosidase was capable of starch accumulation. However, the positive pollen expressing the  $\beta$ -glucosidase was capable of accumulating more starch in a culture medium supplemented with kinetin in comparison with the medium without exogenous supply of cytokinin. The aforementioned results suggest that *Zm-*

*p60.1* could also act as a glucosyltransferase, thereby increasing the pool of cytokinin conjugates. Thus, the levels of free cytokinins in the pollen of positive plants were insufficient to trigger starch accumulation in this type of pollen in the absence of exogenous cytokinin source. Results of cytokinin composition analyses of the developing tobacco pollen showed for the first time to my knowledge that higher plant pollen comprised of different highly dynamic cytokinin types. The pollen expressing the  $\beta$ -glucosidase showed significant differences in cytokinin contents and dynamics in comparison with the pollen not expressing *Zm-p60.1*. However, the differences could not be explained simply by *Zm-p60.1* cytokinin-glucoside deglycosylating or glucosyltransferase activities. The starchless phenotype of *Zm-p60.1* correlated well with the changes in starch metabolizing enzymes.

## CONCLUSION

The decreased starch formation in the pollen expressing the  $\beta$ -glucosidase *Zm-p60.1* may not be attributed to defects in the starch-synthesizing mechanism, but probably to metabolic deregulation caused by several physiological factors such as: the slight decrease in the activity of ADPG-pyrophosphorylase (AGPase) which has a pivotal role in starch biosynthesis; increase in the activity of starch-phosphorylase and amylase which on the contrary degrade starch; considerable increase in the activity of UDPG-pyrophosphorylase (UGPase) which influence may indirectly decrease starch biosynthesis, probably by setting increased requirement for glucose-1-phosphate, thereby reducing the pool of glucose-1-phosphate, the substrate for AGPase.

## ACKNOWLEDGMENT

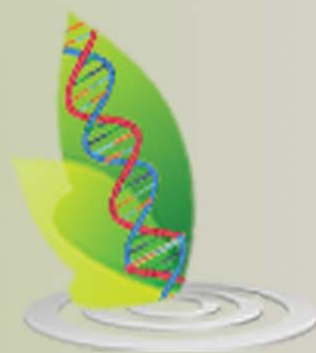
My gratitude also goes to my former colleagues at the Laboratory of Plant Anatomy and Physiology, Faculty of Science at Charles University in Prague. Finally, I would like to thank my family for their steadfast moral support.

## REFERENCES

- Bernfeld P (1966), "Amylase, Alpha and Beta", In S P Colowick and N O Kaplan (Eds.), *Methods of Enzymology*, Vol. 1, pp. 149-158, Acad. Press, New York, London.
- Brzobohaty B, Moore I, Kristoffersen P, Bako L, Campos N, Schell J and Palme K (1993), "Release of Active Cytokinin By A Beta-glucosidase Localized to the Root Meristem", *Science*, Vol. 262, pp. 1051-1054.
- Caspar C, Huber S C and Sommerville C (1985), "Alterations in Growth, Photosynthesis and Respiration in a Starch Mutant of *Arabidopsis Thaliana* L. Deficient in Chloroplast Phosphoglucomutase Activity", *Plant Physiol.*, Vol. 79, pp. 1-7.
- Clements C and Audran J C (1994), "Anther Wall Controls Pollen Starch Accumulation in Lillium", *Sbornik z Konference "Frontiers in Sexual Plant Reproduction"*, Viden.
- Clements C, Burrus M, Audran J C (1996), "Floral Organ Growth and Carbohydrate Content During Pollen Development in Lillium", *Amer. J. Bot.*, Vol. 83, pp. 459-469.
- Denyer K, Hylton C M and Smith A M (1994), "The Effect of High Temperature on Starch Synthesis and Activity of Starch Synthase", *Aust. J. Plant Physiol.*, Vol. 21, pp. 783-789.
- Ghosh H P and Preiss J (1966), "Adenosine Diphosphate Glucose Pyrophosphate. A Regulatory Enzyme in the Biosynthesis of Starch in Spinach Chloroplasts", *J. Biol. Chem.*, Vol. 241, pp. 4491-4505.
- Holligan P M, McGee E E M and Lewis D M (1974), *New Physiol.*, Vol. 73, pp. 873-879.
- Hylton C and Smith A M (1992), "The RB Mutation of Peas Causes Structural and Regulatory Changes in Adpglc Pyrophosphorylase from Developing Embryos", *Plant Physiol.*, Vol. 99, pp. 1626-1634.
- Keeling G L, Banisadr R, Wasserman B P and Singletary G W (1994), "Effect of Temperature On Enzymes in the Pathway of Starch Biosynthesis in Developing Wheat and Maize Grain", *Aust. J. Plant Physiol.*, Vol. 21, pp. 807-827.
- Khanna S K, Krishnan P S and Sanwa G G (1971), "Glucan Phosphorylase in Leaves of Dendrophyte Falcate: Purification and Characterisation of Enzyme", *Phytochemistry*, Vol. 10, pp. 551-559.
- Kleczkowski LA, Villand P, Luthi E, Olsen O A and Preiss J (1993), "Insensitivity of Barley Endosperm ADPGlcppase to 3-phosphoglycerate and Orthophosphate Regulation", *Plant Physiol.*, Vol. 101, pp. 179-186.
- Kyo M and Harada H (1986), "Control of the Developmental Pathway of Tobacco In Vitro", *Planta*, Vol. 168, pp. 427-432.
- Lin T P, Caspar T, Sommerville C and Preiss (1988a), "Isolation and Characterisation of a Starchless Mutant of *Arabidopsis thaliana* L. Henyth Lacking ADP-Glucose Pyrophosphorylase Activity", *Plant Physiol.*, Vol. 86, pp. 1131-1135.

15. Linskens H F (1966), "Die Anderung des Proteins und Enzym-musters wahrend der Pollenmeiose und Pollentwicklung Physiologische Untersuchungen zur Reifeteilung", *Planta*, Vol. 69, pp. 79-89.
16. Lustinec J, Hadacova V, Kaminek M and Prochazka Z (1983), "Quantitative Determination of Starch, Amylase, and Amylopectin in Plant Tissues Using Glass Fibre Paper", *Anal. Biochem.*, Vol. 132, pp. 265-271.
17. Lustinec J, Kaminek M and Hadacova V (1976), "Hormonal Control of Starch Accumulation And Cell Expansion in Tobacco Stem pith", *Acta universitatis Nicolai Copernici. Biologia XVIII- Nauki matematyczno-przyrodnicze- Zsezyt 37*.
18. Megbo B C (2000), "Description of the Dynamics of Starch Metabolism in the Pollen of a Transgenic Tobacco Expressing a  $\alpha$ -glucosidase, *Zm-p60.1*", Charles University in Prague. National Technical Library.
19. Miyazawa Y, Sakai A, Miyagishima S, Takano H, Kawano S and Kuroiwa T (1999), "Auxin and Cytokinin have Opposite Effects on Amyloplast Development and the Expression of Starch Synthesis Genes in Cultured Bright Yellow-2 Tobacco Cells", *Plant Physiol.*, Vol. 121, pp. 461-469.
20. Muller-Rober B T, Sonnewald U and Willmitzer L (1992), "Inhibition of ADP-Glucose Pyrophosphorylase in Transgenic Potatoes Leads to Sugar-storing Tubers and Influences Tuber Formation and Expression of Tuber Storage Protein Genes", *EMBO J.* Vol. 11, pp. 1229-1238.
21. Murashige T and Skoog F (1962), "A Revised Medium for Rapid Growth and Bio-assays With Tobacco Tissue Cultures", *Physiol. Plant*, Vol. 15, No. 3, pp. 473-497.
22. Okita T (1992), "Is There An Alternative Pathway for Starch Synthesis?", *Plant Physiol.*, Vol. 100, pp. 560-564.
23. Pacini E and Jupiter B (1984), The Ultrastructure of Pollen Grain Development in *Lycopersicum peruvianum*", *Caryologia*, Vol. 37, pp. 21-50.
24. Pratt S, Frommer W B, Hofgen R, Keil M, Kossmann J, Koster-Topfer M, Liu X J and Muller B, Pena-Cortes H, Rocha-Sosa M, Sanchez-Serrano J J, Sonnewald U and Willmitzer L (1990), "Gene Expression During Tuber Development in Potato Plants", *FEBS Lett.*, Vol. 268, pp. 334-338.
25. Preiss J and Levi C (1980), "Starch Biosynthesis and Degradation", in J Preiss (Ed.), *The Biochemistry of Plants*, Vol. 3 (Carbohydrates: structure and function), pp. 371-423, Acad. Press New York, London, Toronto, Sydney, San Francisco.
26. Pucher G W, Leavenworth C S and Vickery H B (1948), *Anal. Chem.*, Vol. 20, pp. 850-853.
27. Smith A M, Betty M and Bedford I D (1989), "Evidence that the RB Locus Alters the Starch Content of Developing pea Embryos through an Effect on ADP-Glucose Pyrophosphorylase", *Plant Physiol.*, Vol. 89, pp. 1279-1284.
28. Sowokinos J (1976), Pyrophosphorylase in *Solanum tuberosum*. L. Changes in ADP-Glucose and UDP-Glucose Pyrophosphorylase Activities Associated

- with Starch Biosynthesis During Tuberization, Maturation and Storage of Potatoes”, *Plant Physiol.*, Vol. 57, pp. 63-68.
29. Sun C, Sathish P, Ahlandsberg S and Jansson C (1999), Analyses of Isoamylase Gene Activity in Wild-type Barley Indicate Its Involvement in Starch Synthesis”, *Plant Mol. Biol.*, Vol. 40, pp. 431-443.
30. Tsai C Y and Nelson O E (1996), “Starch-Deficient Maize Lacking Adenosine Diphosphate Glucose Pyrophosphorylase Activity”, *Science*, Vol. 151, pp. 341-343.
31. Van Berkel J, Conrads-Strauch J and Steup M (1991), “Glucan-Phosphorylase Forms In Cotyledons of *Pisum Sativum* L.: Localization, Developmental Change, In Vitro Translation and Processing”, *Planta*, Vol. 185, pp. 432-439.
32. Vella J and Copeland L (1990), “UDP-Glucose Pyrophosphorylase from the Plant Fraction of Nitrogen-Fixing Soybean Nodules”, *Physiol. Plant*, Vol. 78, pp. 140-146.
33. Villanueva V R, Mathivet V and Sangwan R S (1985), “RNA, Proteins and Polyamines During Gametophytic and Androgenic Development in *Nicotiana Tabacum* and *Datura Innoxia*”, *Plant Growth Reg.*, Vol. 3, pp. 293-307.
34. Weber H, Heim U, Borisjuk L and Wobus U (1995), “Cell-Type Specific, Coordinate Expression of Two Adp-glucose Pyrophosphorylase Genes in Relation to Starch Biosynthesis During Seed Development in *Vicia faba* L.”, *Planta*, Vol. 195, pp. 352-361.
35. Zarsky V, Capkova V, Hrabetova E and Tupy J (1985), “Protein Changes During Pollen Development in *Nicotiana tabacum* L.”, *Biolo. Plant*, Vol. 27, pp. 438-444.
36. Zhang H, Liu M Y and Romeo T (1996), “Coordinate Genetic Regulation of Glycogen Catabolism and Biosynthesis in *Escherichia coli* via the CSRA Gene Product”, *J. Bacteriol.*, Vol. 178, pp. 1012-1017.



**International Journal of Life Sciences Biotechnology and Pharma Research**

**Hyderabad, INDIA. Ph: +91-09441351700, 09059645577**

**E-mail: editorijlbpr@gmail.com or editor@ijlbpr.com**

**Website: www.ijlbpr.com**

